

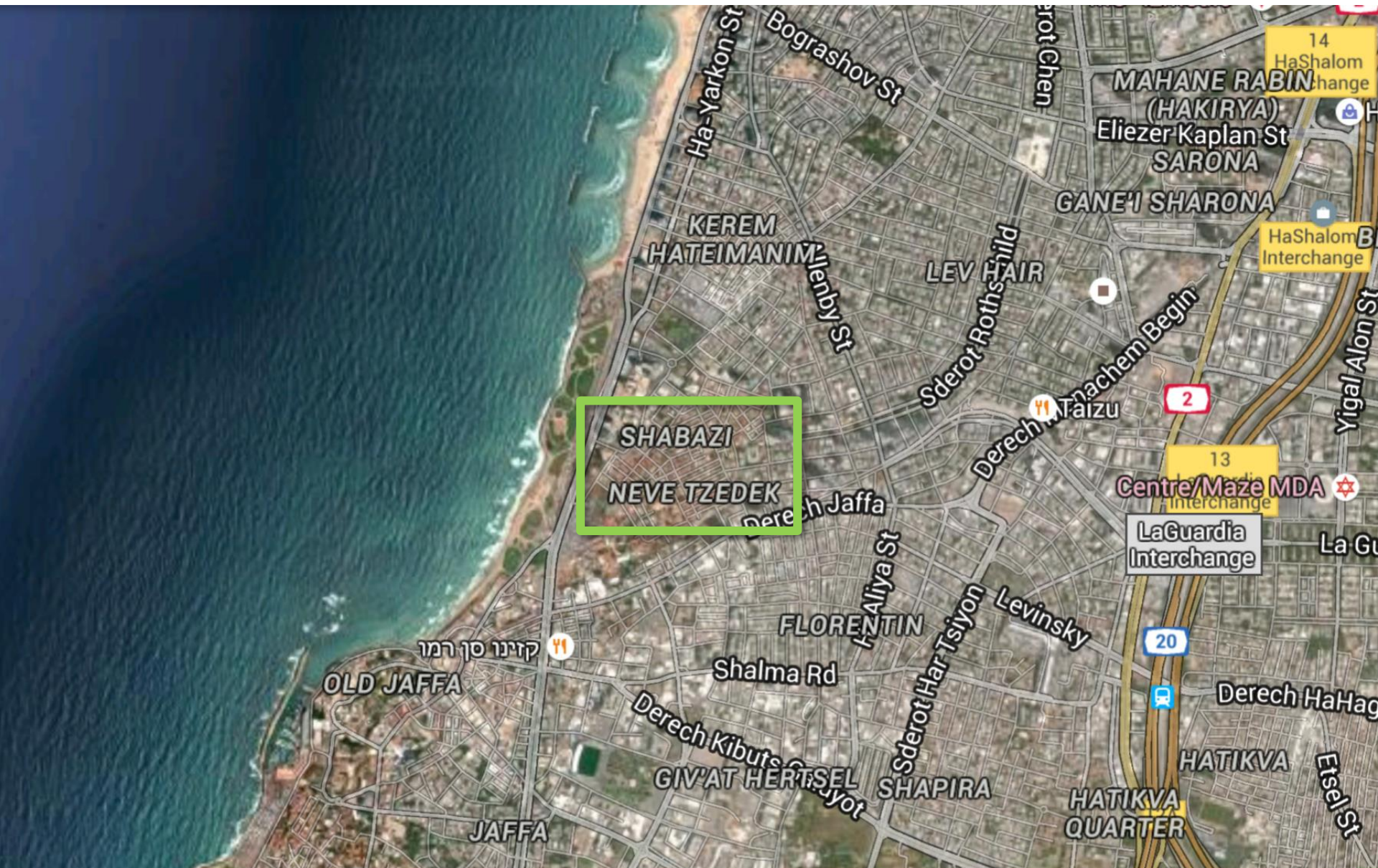


Tel Aviv Light Rail projects

# Nechushtan Bridge



New construction design  
for a pedestrian bridge  
between Neve Zedek Lower  
and Amzeleg Street

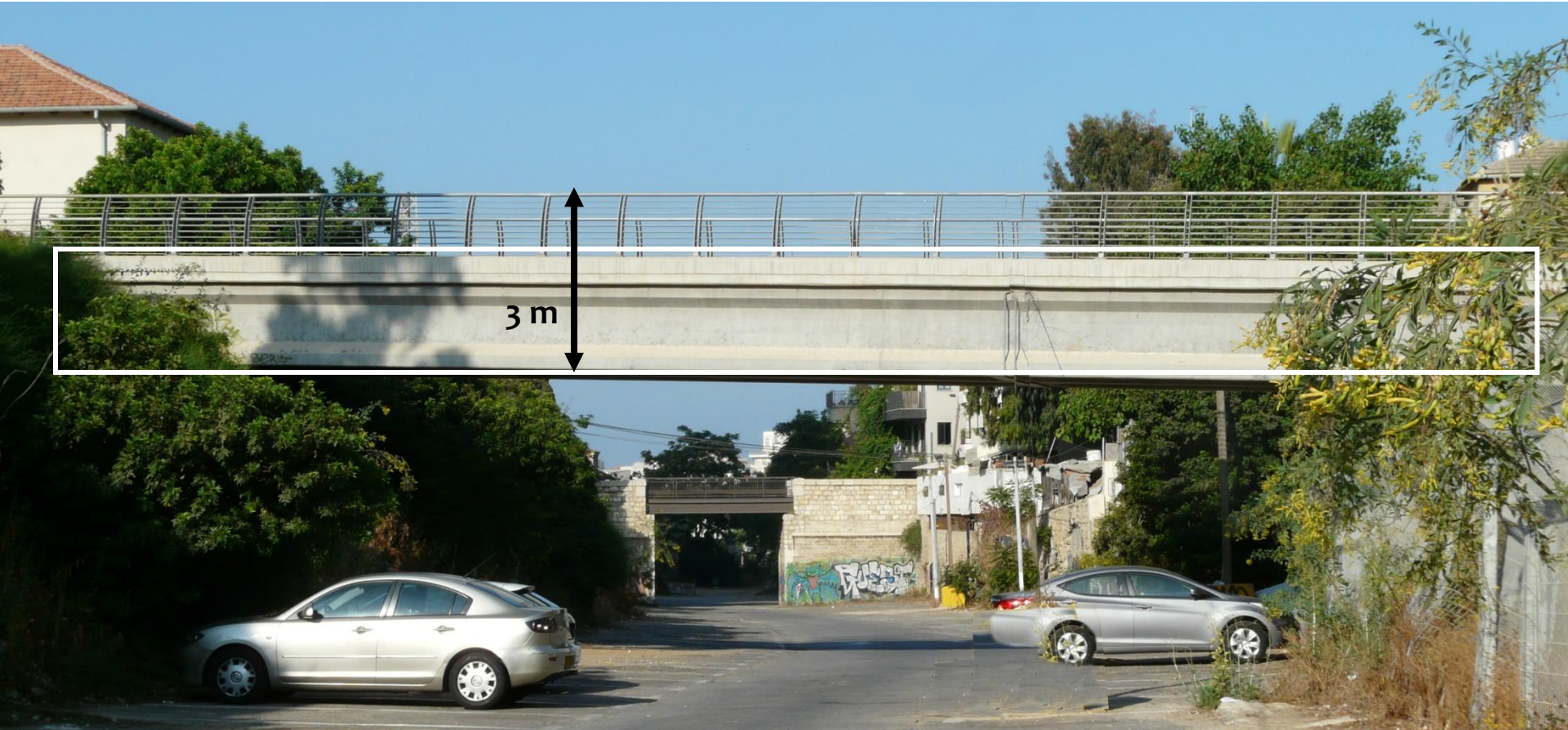


# Location in Neve Tzedek neighborhood



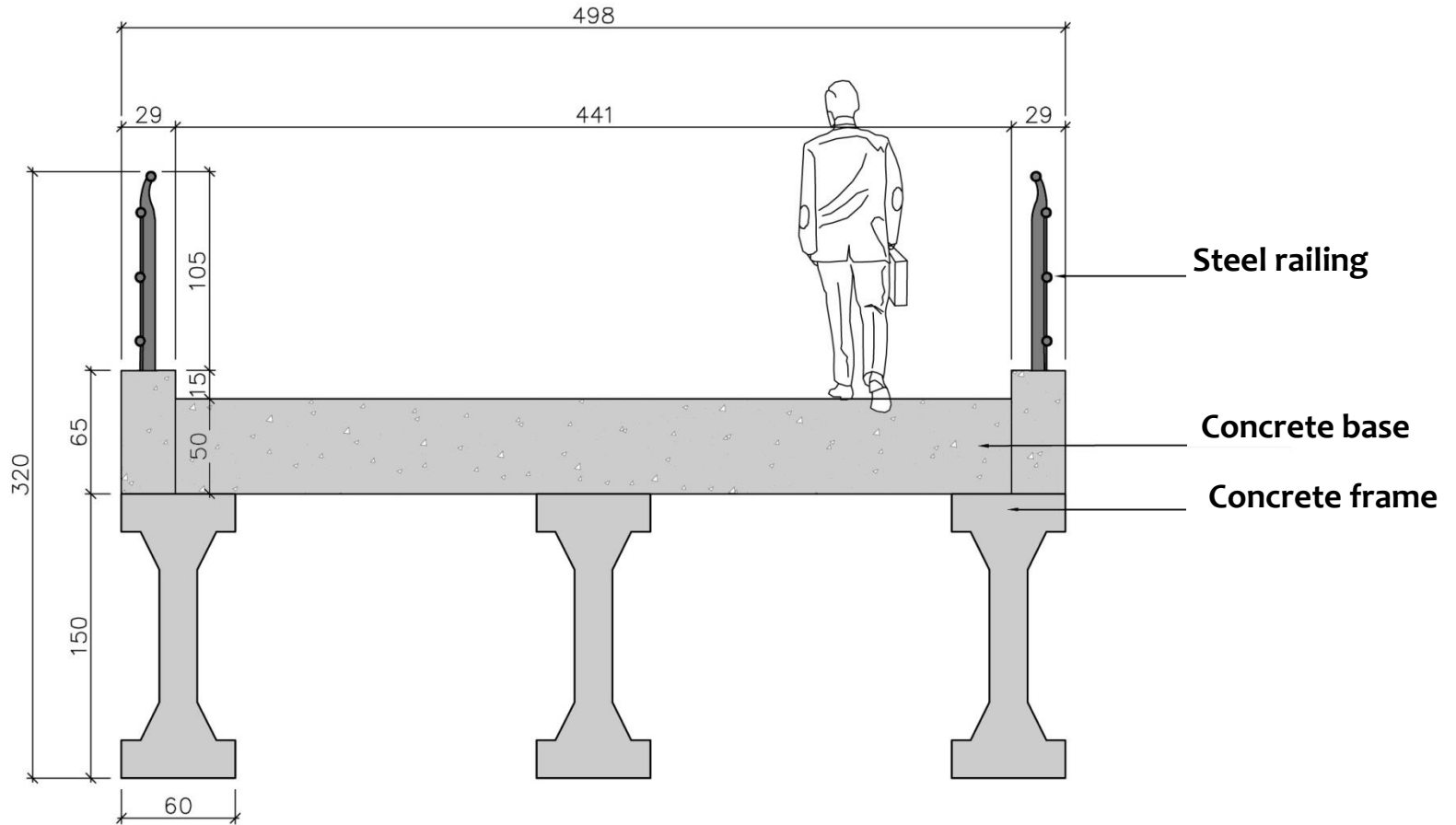


- The bridge for pedestrians and cyclists connects between the Neve Tzedek neighborhood and the Neve Tzedek Tower plaza consisting of historic buildings and a modern residential tower
- The bridge is visible from east to west from a great distance with the historic Chelouche Bridge in the background and from west to east with the city of Tel Aviv in the background
- Nehushtan Bridge has very thick and heavy appearance in general
- It is more dominant in the urban fabric than Chelouch Bridge



3 m

- Length: approximately 30.0 m
- Width: approximately 5.0 m
- Height: approximately 3.0 m
- Difference in height between the two sides: approximately 1.0 m
- Longitudinal gradient: 3 %



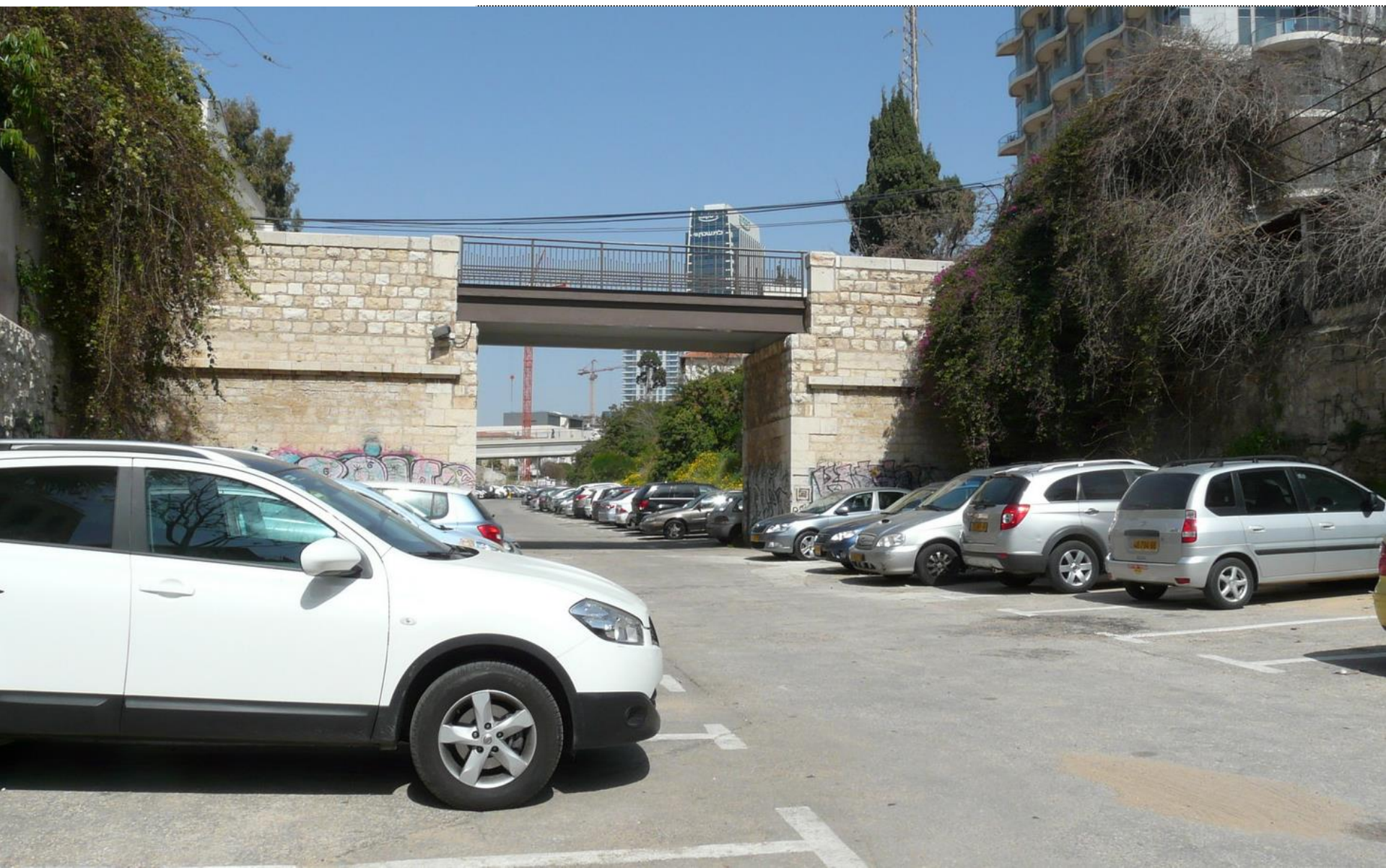
View towards Amzeleg Street



Nechushtan Bridge  
Tel Aviv

Existing situation

Braudo - Maoz  
Landscape Architecture Ltd.





# View towards Neve Tzedek Tower



Nechushtan Bridge  
Tel Aviv

Existing situation

Braudo - Maoz  
Landscape Architecture Ltd.

# Historic wall along Amzeleg St.

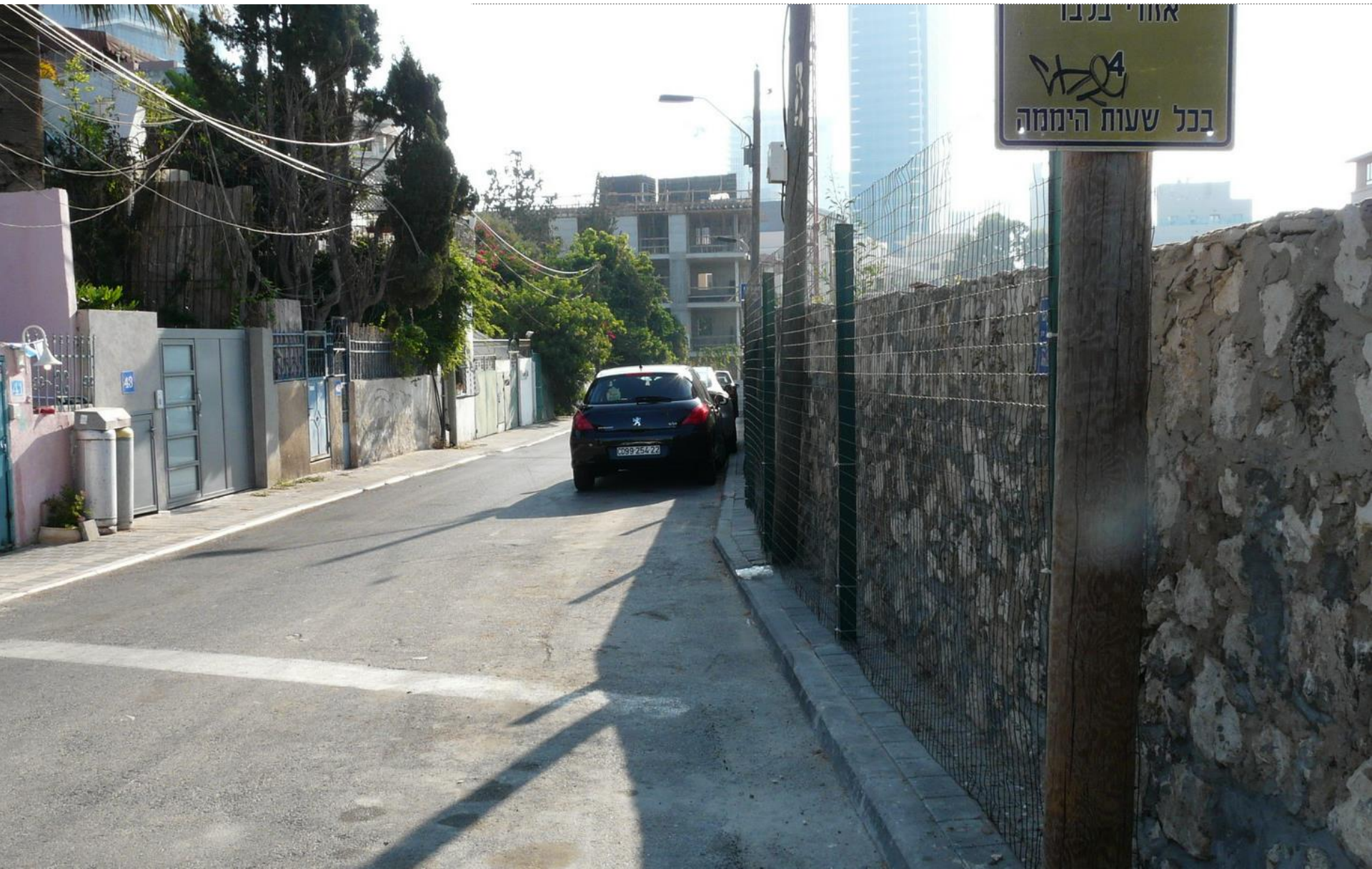


Nechushtan Bridge  
Tel Aviv

Existing situation

Braudo - Maoz  
Landscape Architecture Ltd.

# Historic wall along Amzeleg St.



Nechushtan Bridge  
Tel Aviv

Existing situation

Braudo - Maoz  
Landscape Architecture Ltd.

# Historic wall along Amzeleg St.



Nechushtan Bridge  
Tel Aviv

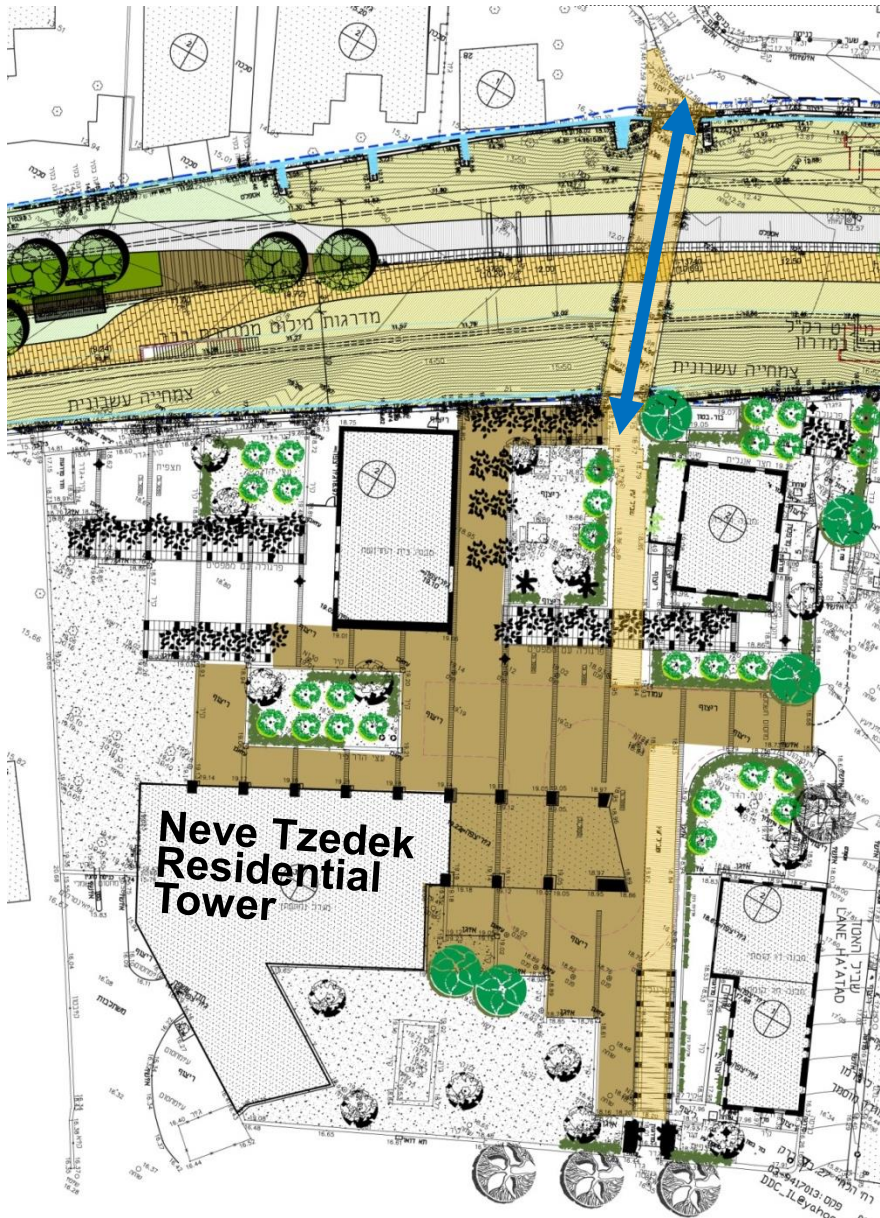
Existing situation

Braudo - Maoz  
Landscape Architecture Ltd.

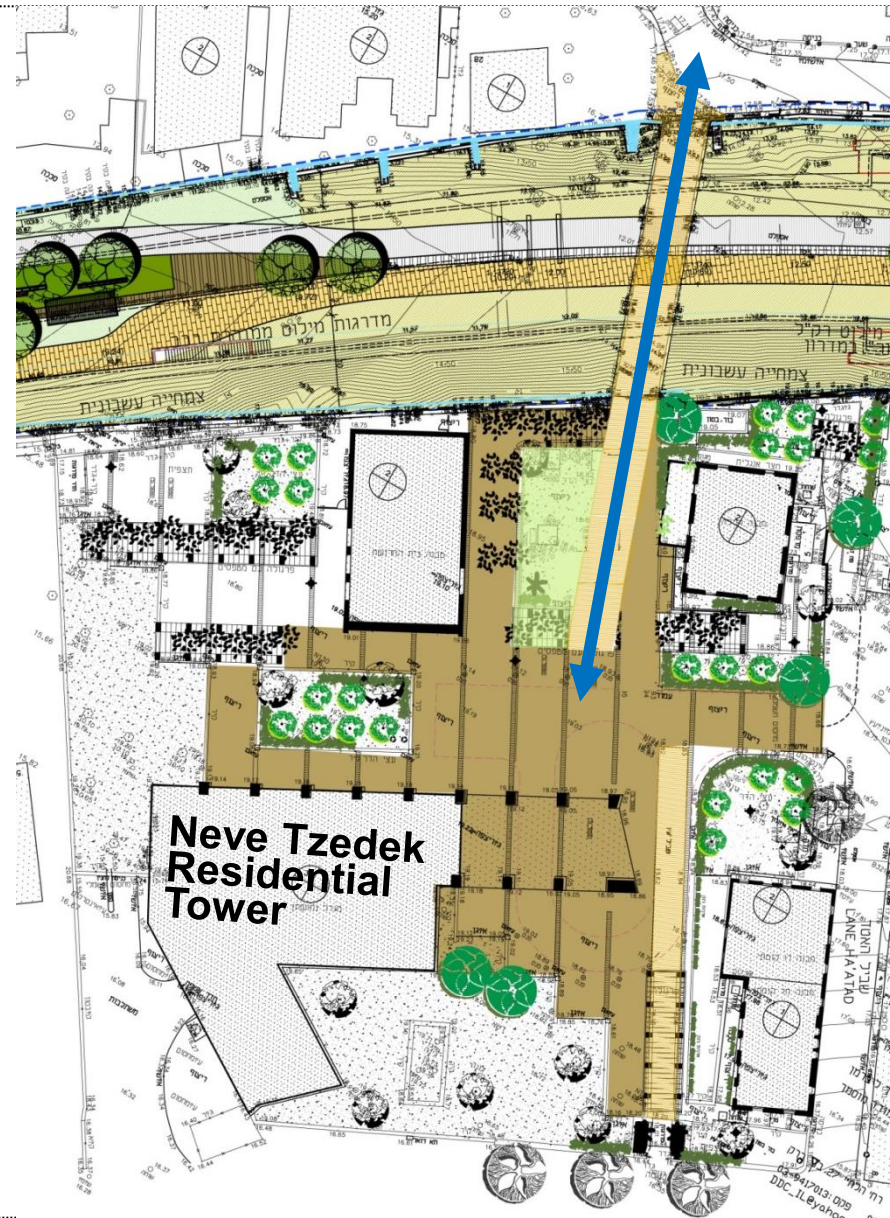


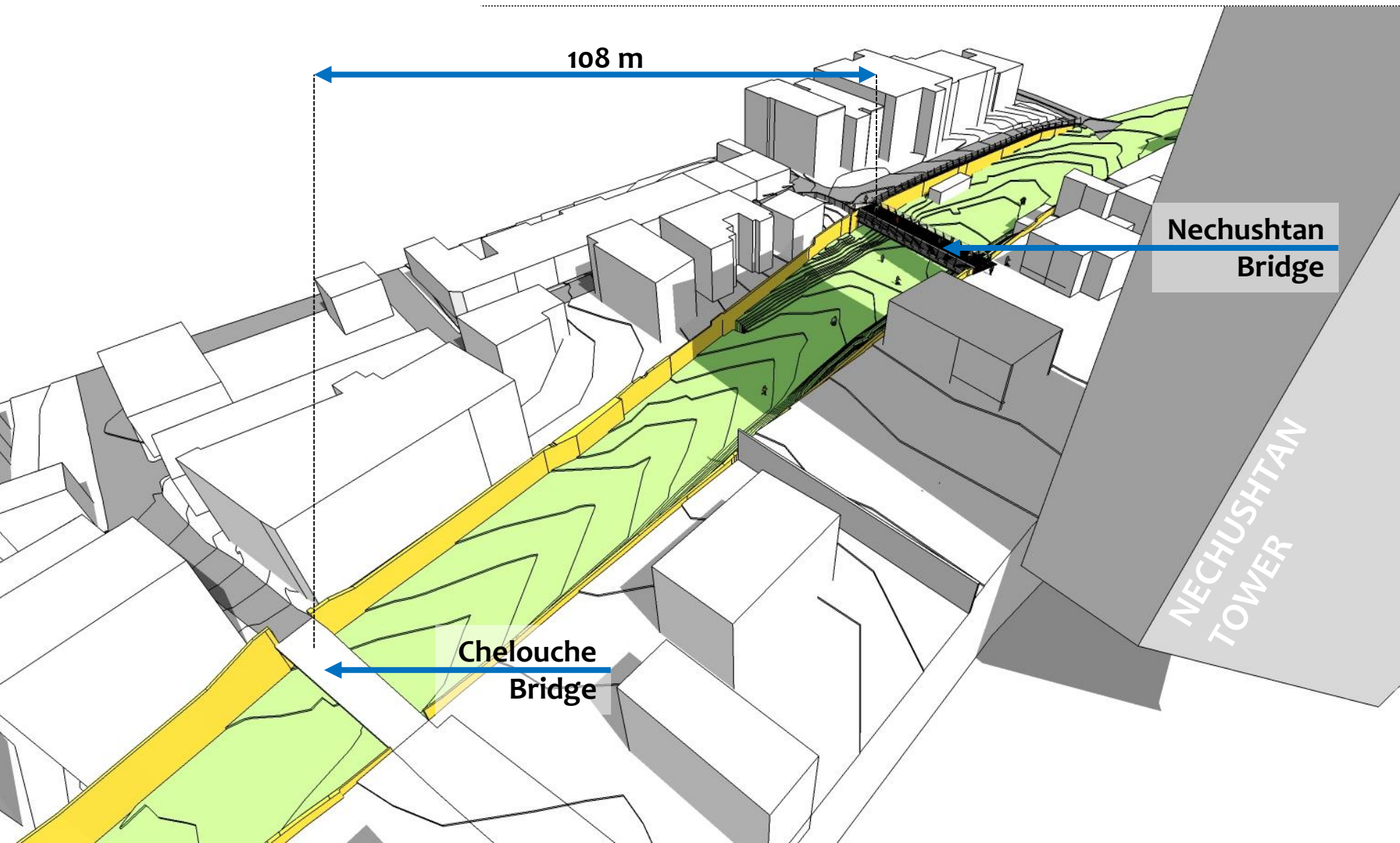


Existing bridge layout



Desired bridge layout





108 m

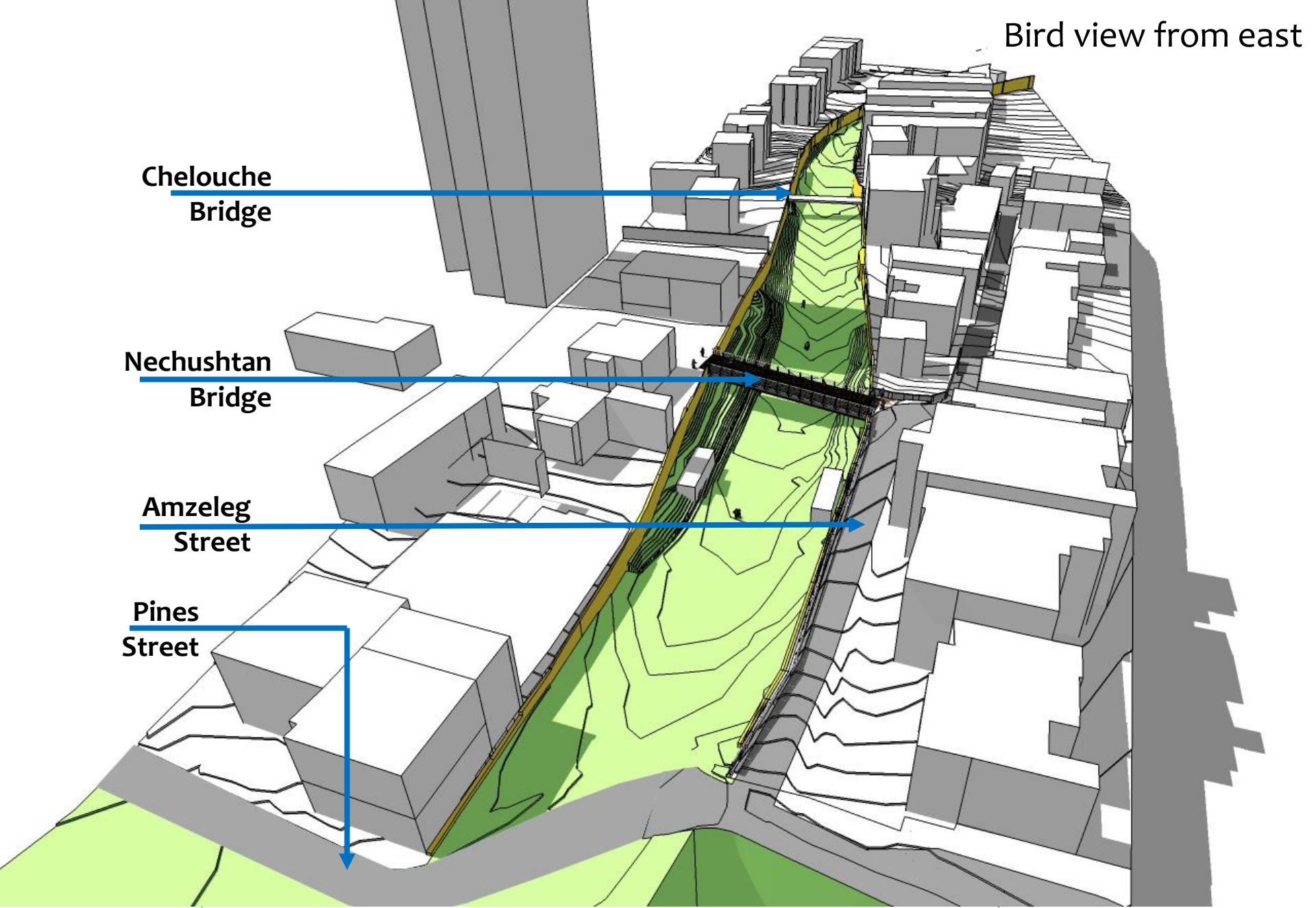
Nechushtan  
Bridge

Chelouche  
Bridge

NECHUSHTAN  
TOWER



Bird view from east



Chelouche  
Bridge

Nechushtan  
Bridge

Amzeleg  
Street

Pines  
Street

Nechushtan Bridge  
Tel Aviv

Design parameters

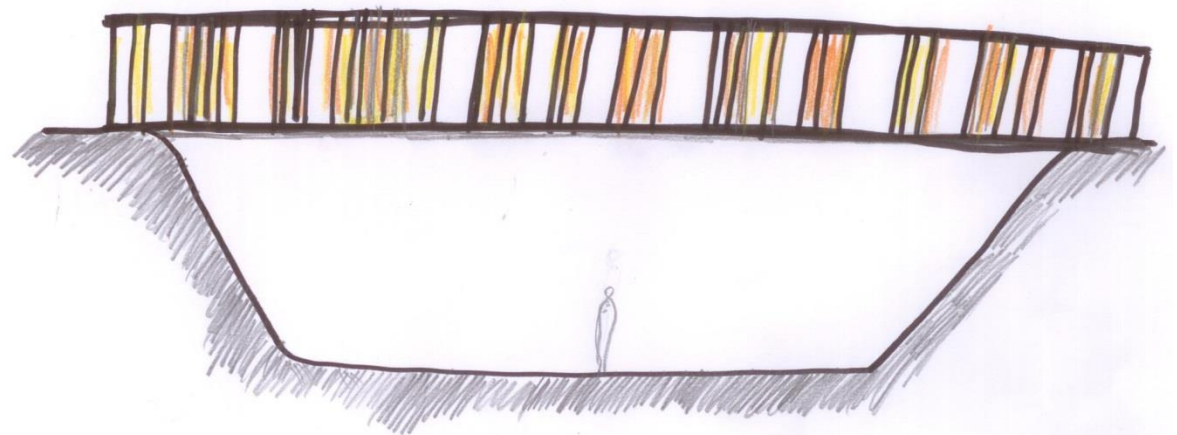
Braudo - Maoz  
Landscape Architecture Ltd.

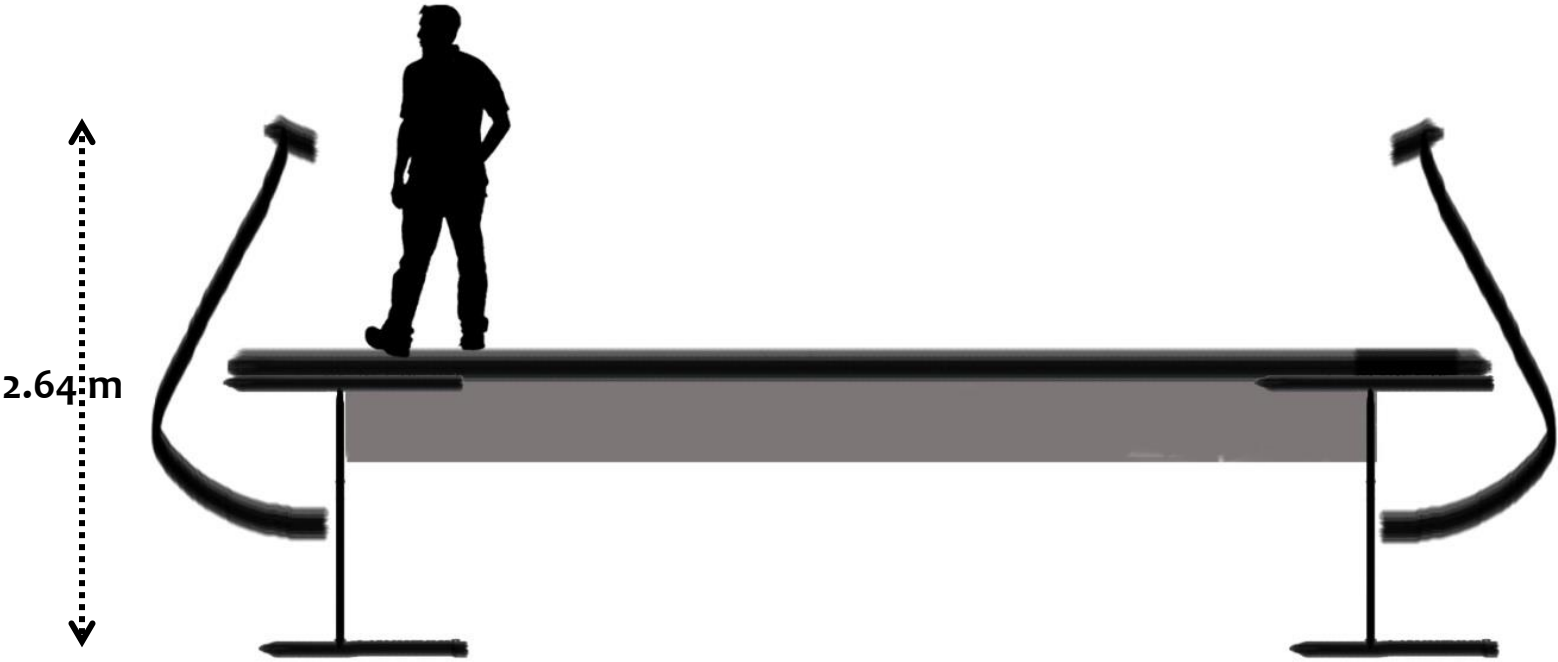
# Program and design of the “Landscape line”

Due to the layout of the bridge and the integrated views together with the historical Chelouche bridge, there is a desire to strengthen its presence in the area. The new bridge is to become "a horizontal line in the urban landscape" without bows or vertical strings attached.

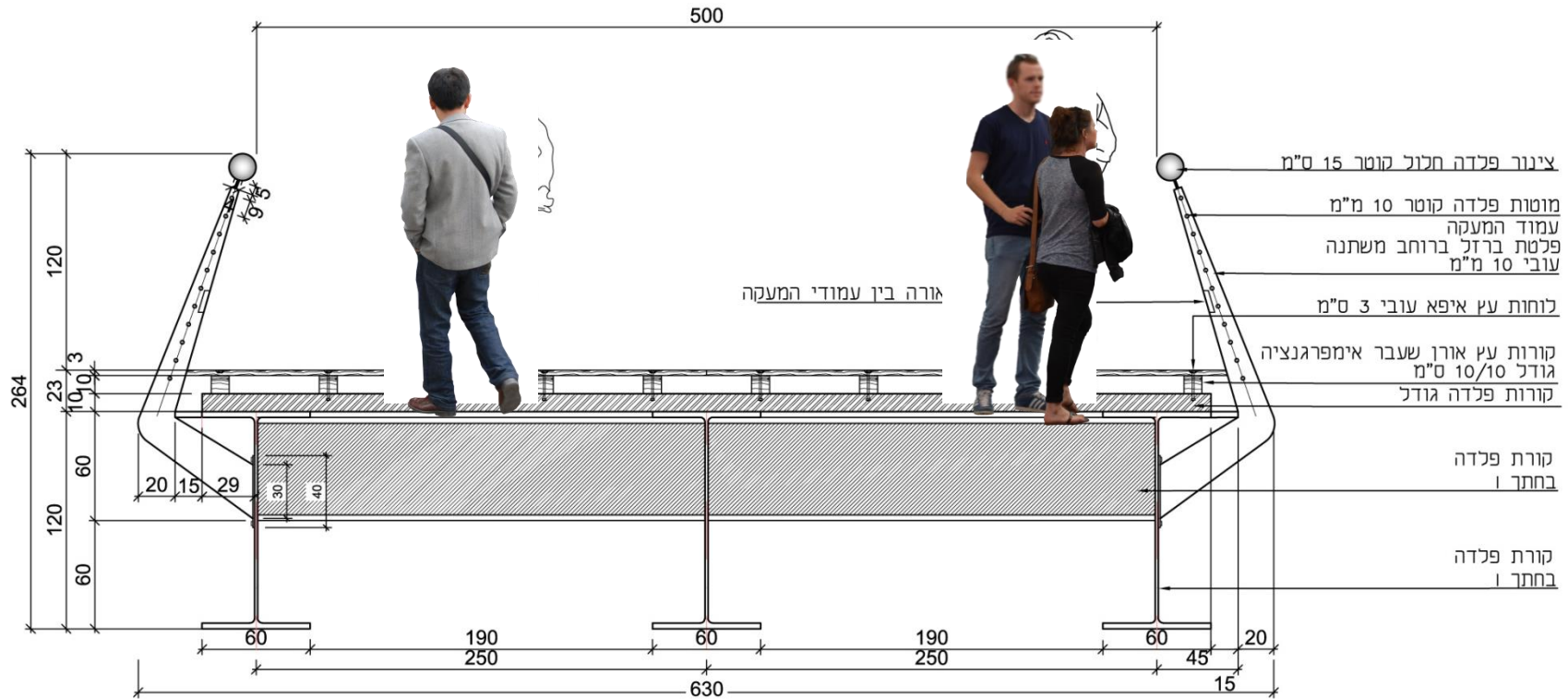
The view from underneath the bridge will be seen by users of the new “Rails Boulevard” that is to be planned as a linear park on the parking area and thus requires special care.

The proposed design is a bridge construction of steel beams with a wooden path and a steel railing with a transparent wood cover in order to emphasize the horizontal line.



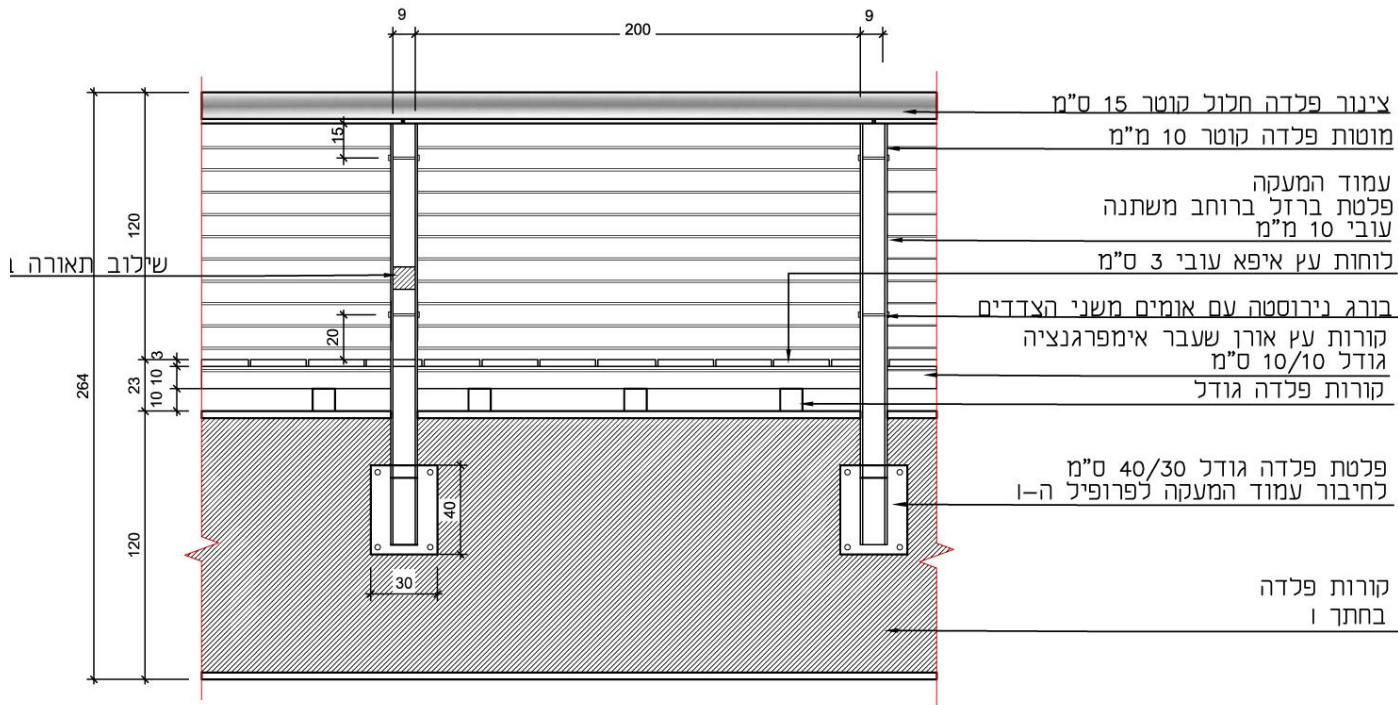


**1** Simple and minimal I – Profile construction with wood deck and bended steel railing



**1** Simple and minimal I – Profile construction with wood deck and bended steel railing

## חלופה 1 – חלופה סטנדרטית- חזית



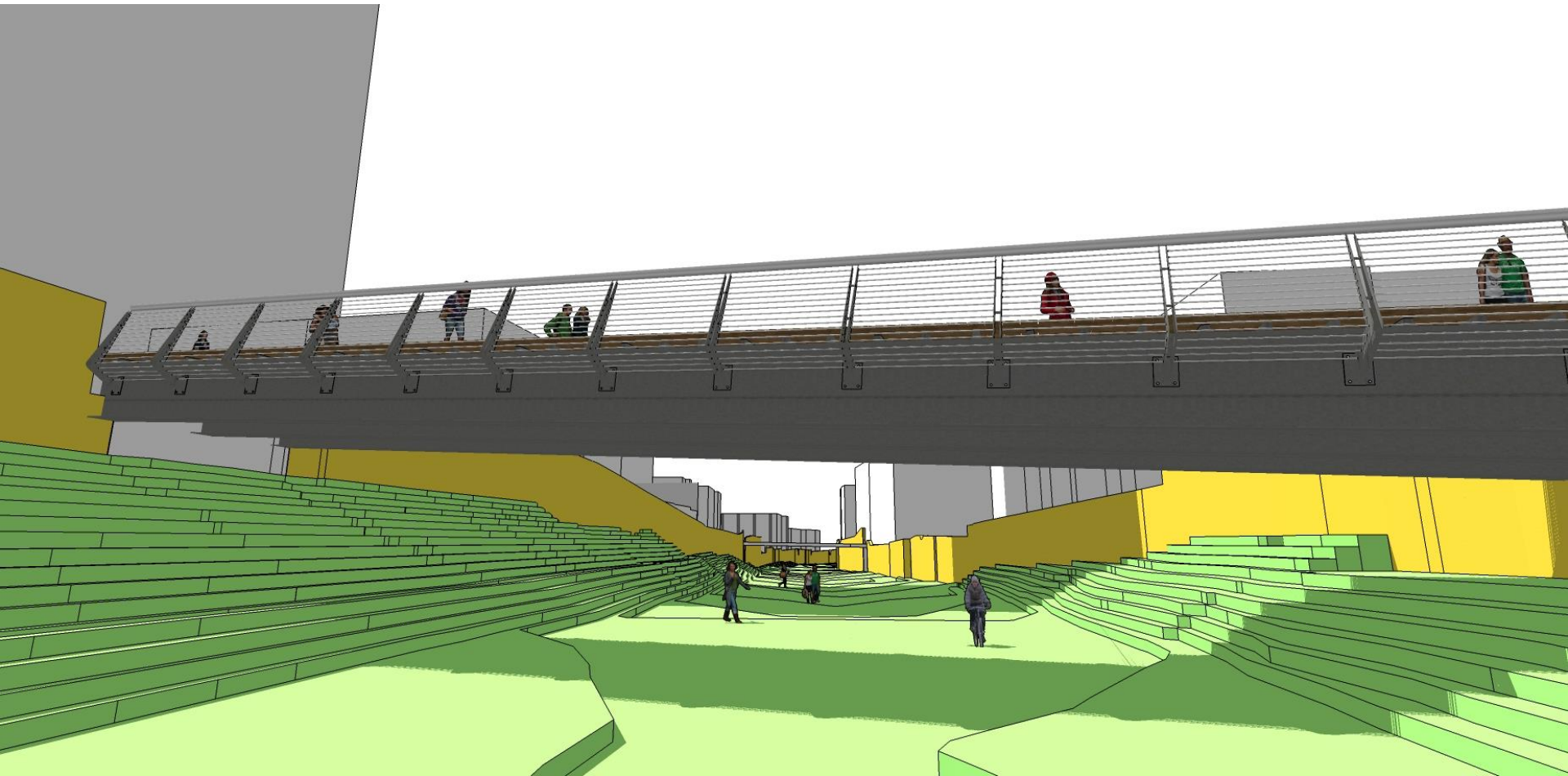
**1** Simple and minimal I – Profile construction with wood deck and bended steel railing

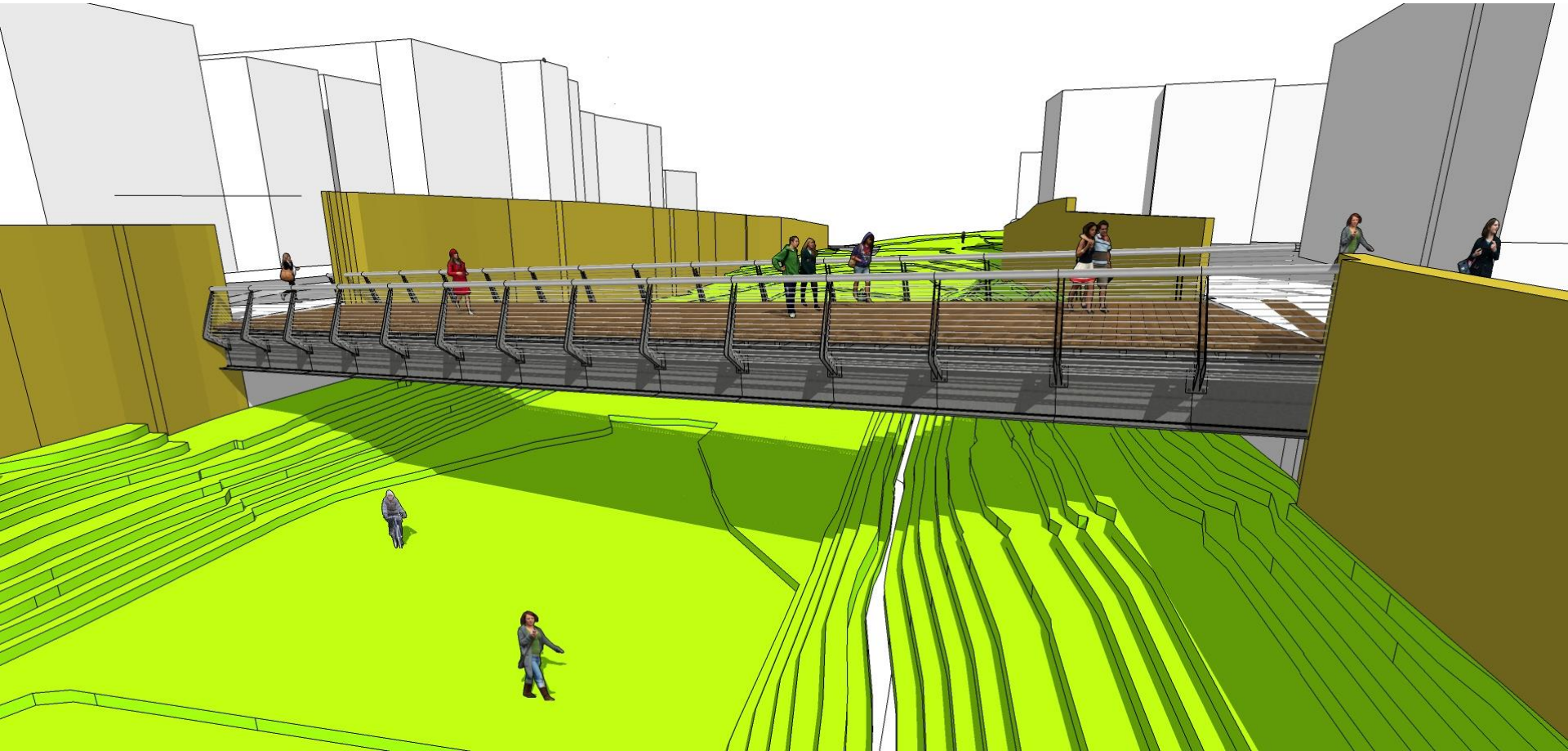


Nechushtan Bridge  
Tel Aviv

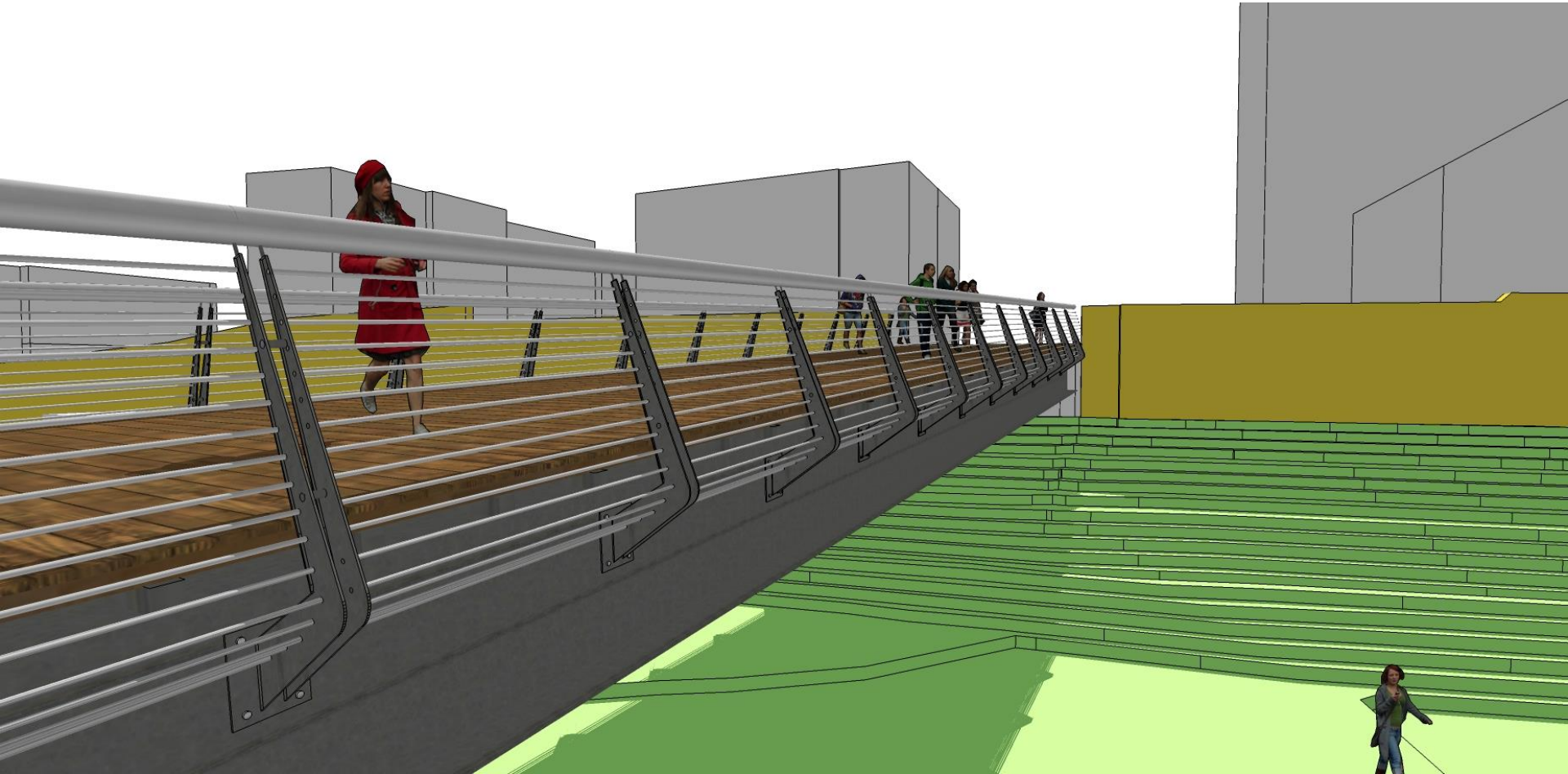
Construction design

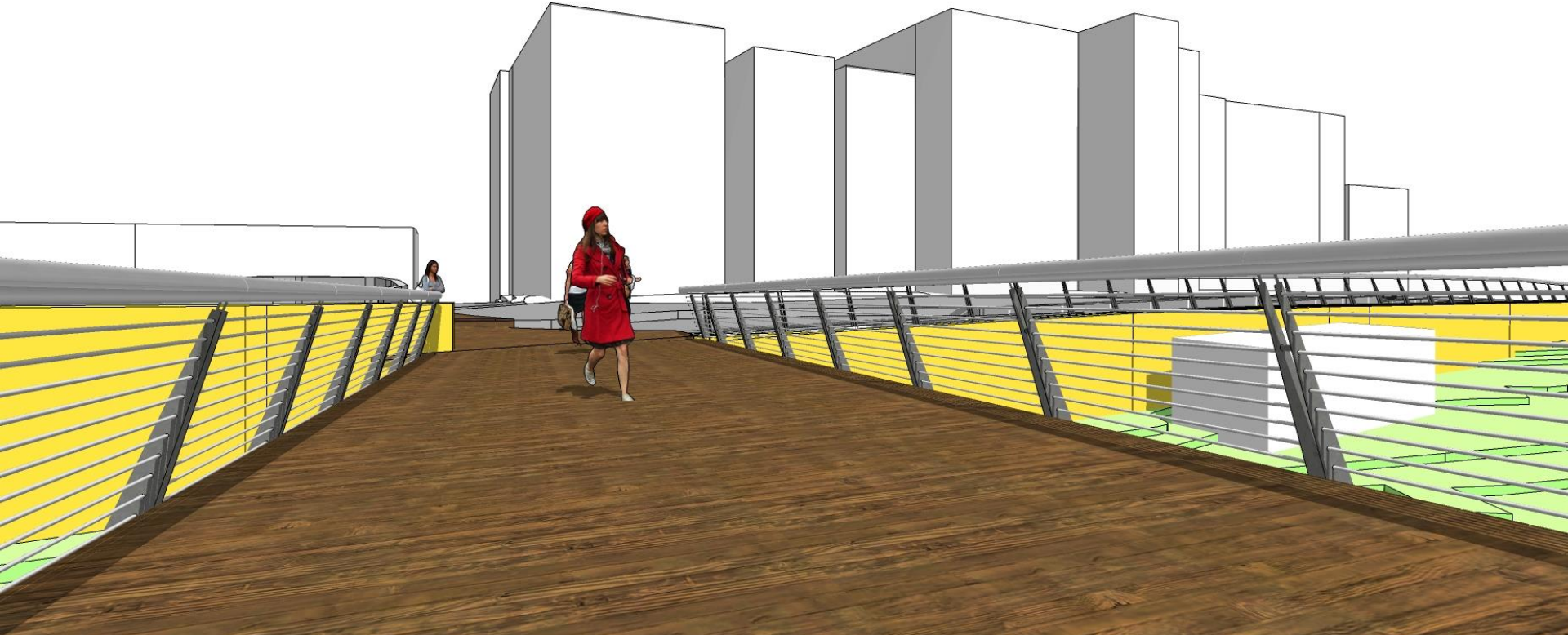
Braudo - Maoz  
Landscape Architecture Ltd.



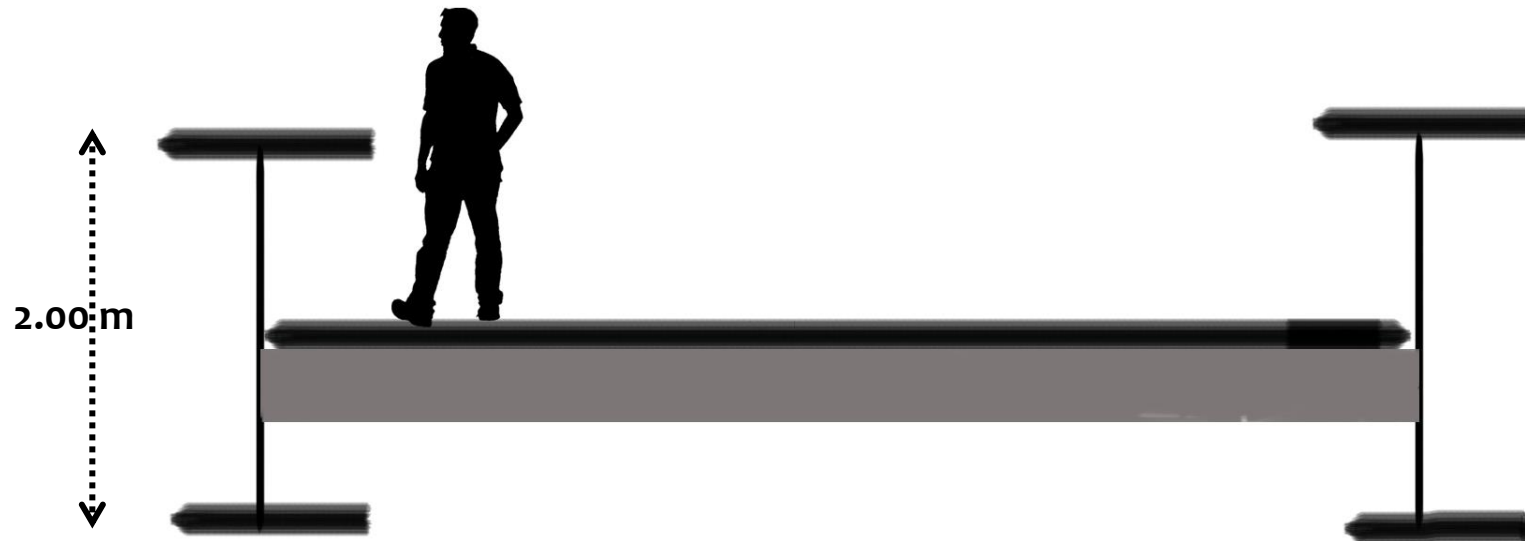




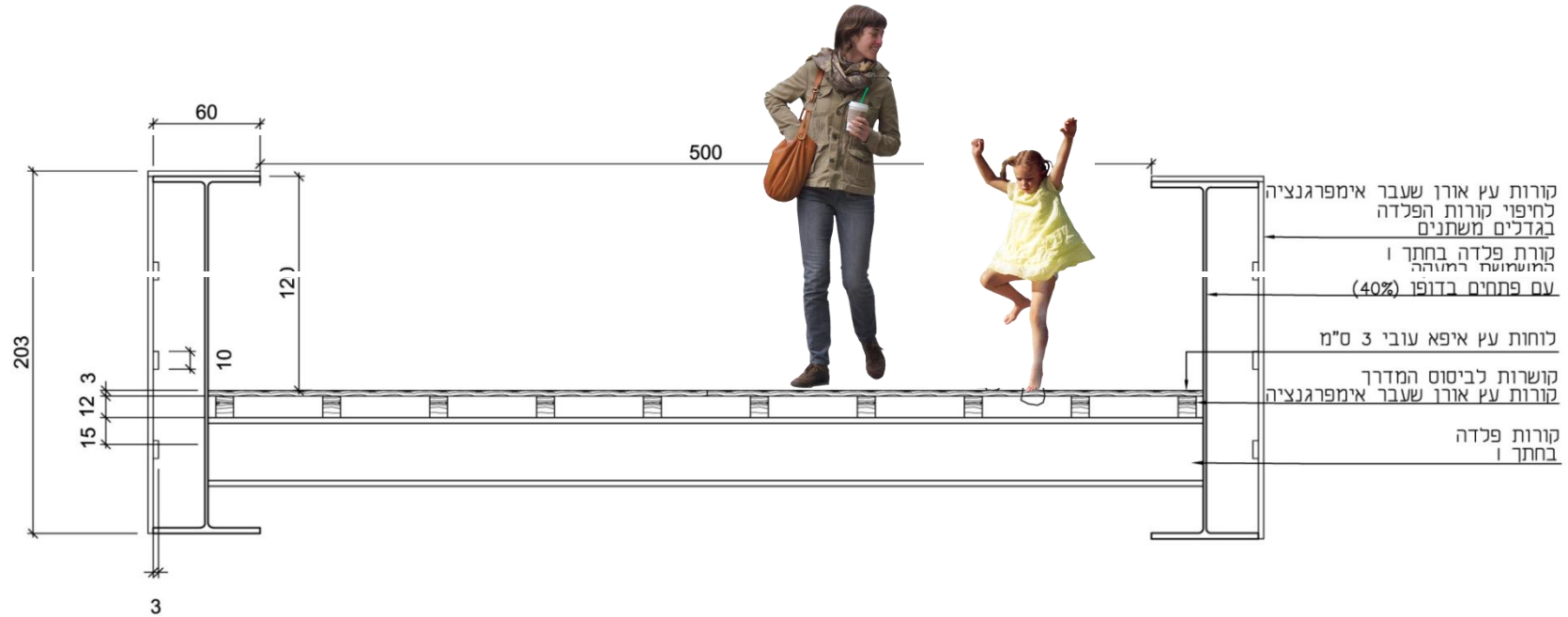




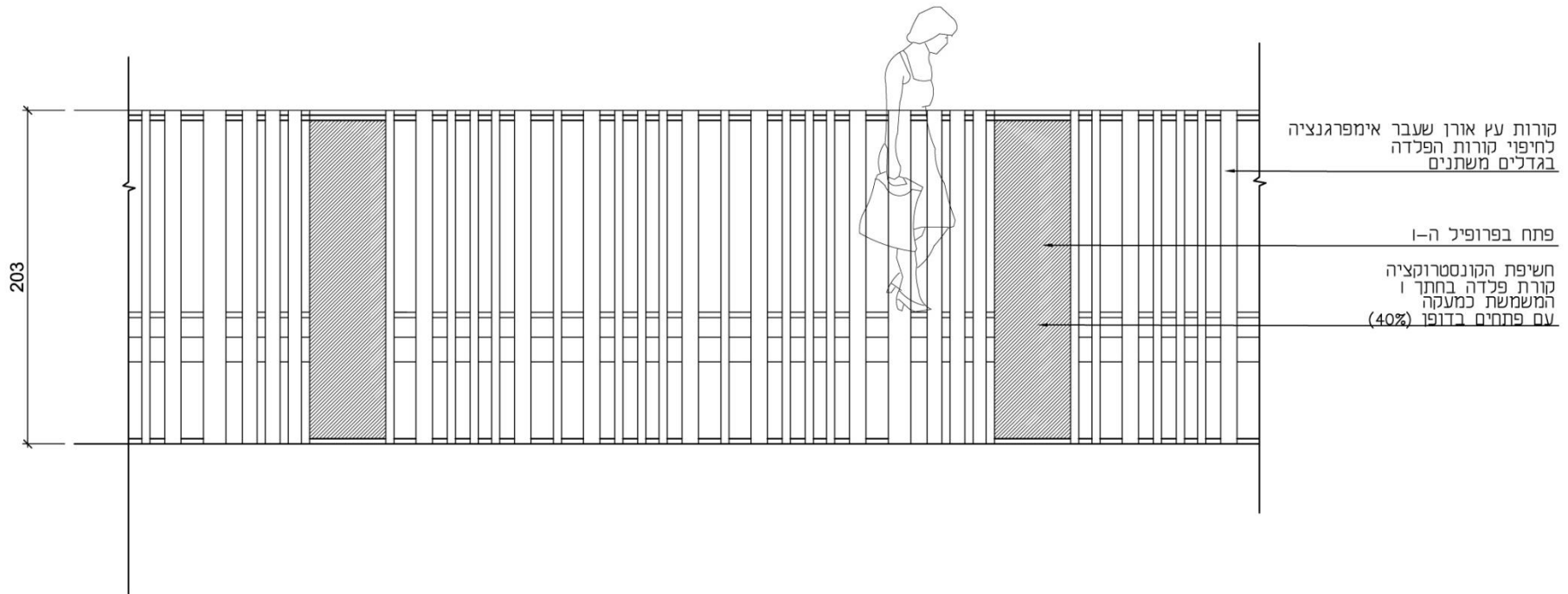
קונסט' פרופיל | ובתוכה יושב מדרך העץ במטרה לצמצם את גובה חזית הגשר



**2** Simple I – Profile construction with wood deck and front cover from pine beams creates the appearance of a sculpture in the landscape, showing a gentle floating facade



**2** Simple I – Profile construction with wood deck and front cover from pine beams creates the appearance of a sculpture in the landscape, showing a gentle floating facade



**2** Simple I – Profile construction with wood deck and front cover from pine beams creates the appearance of a sculpture in the landscape, showing a gentle floating facade

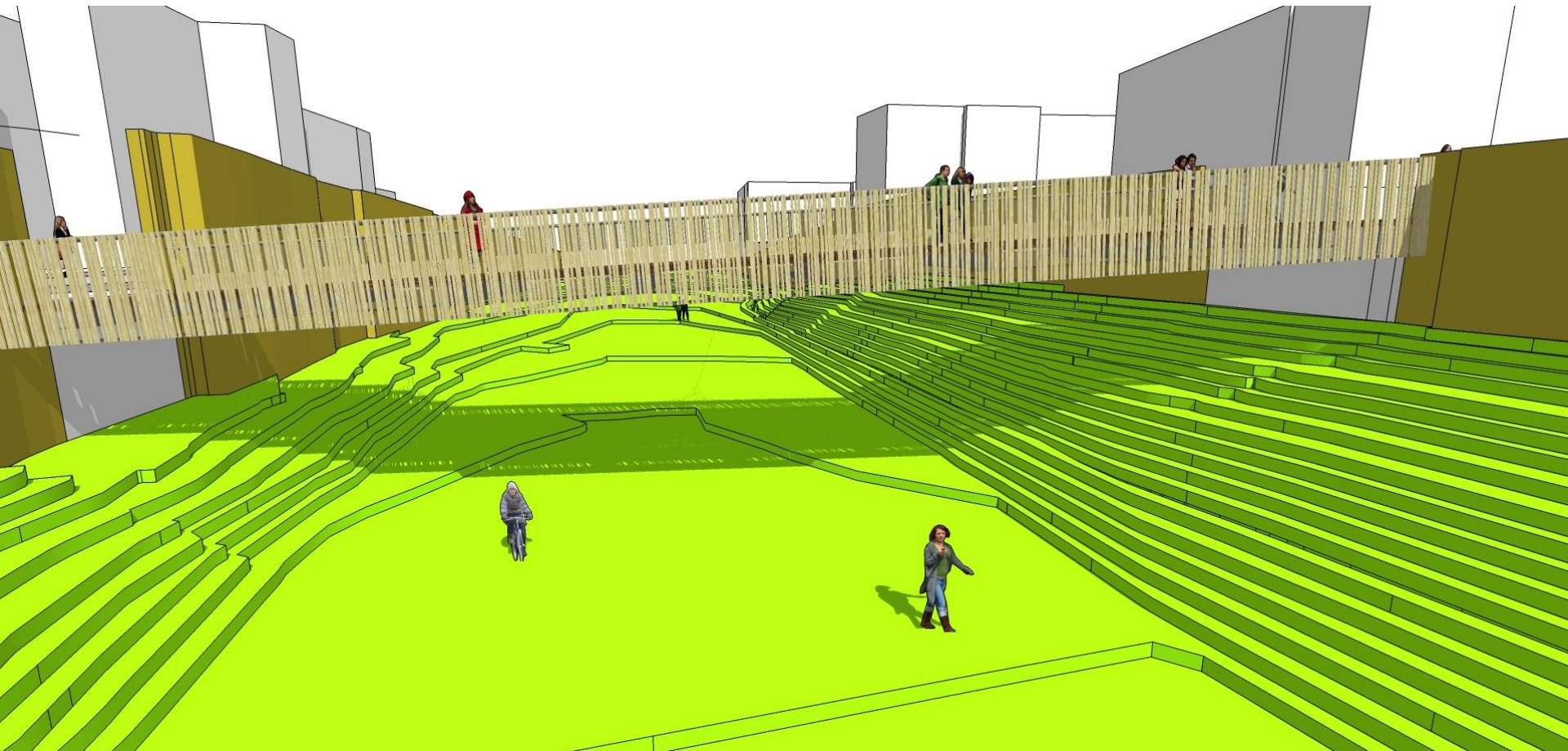


Example of a building cover from irregular sized beams (here: Corten)

# Alternative 2 – Sculpture



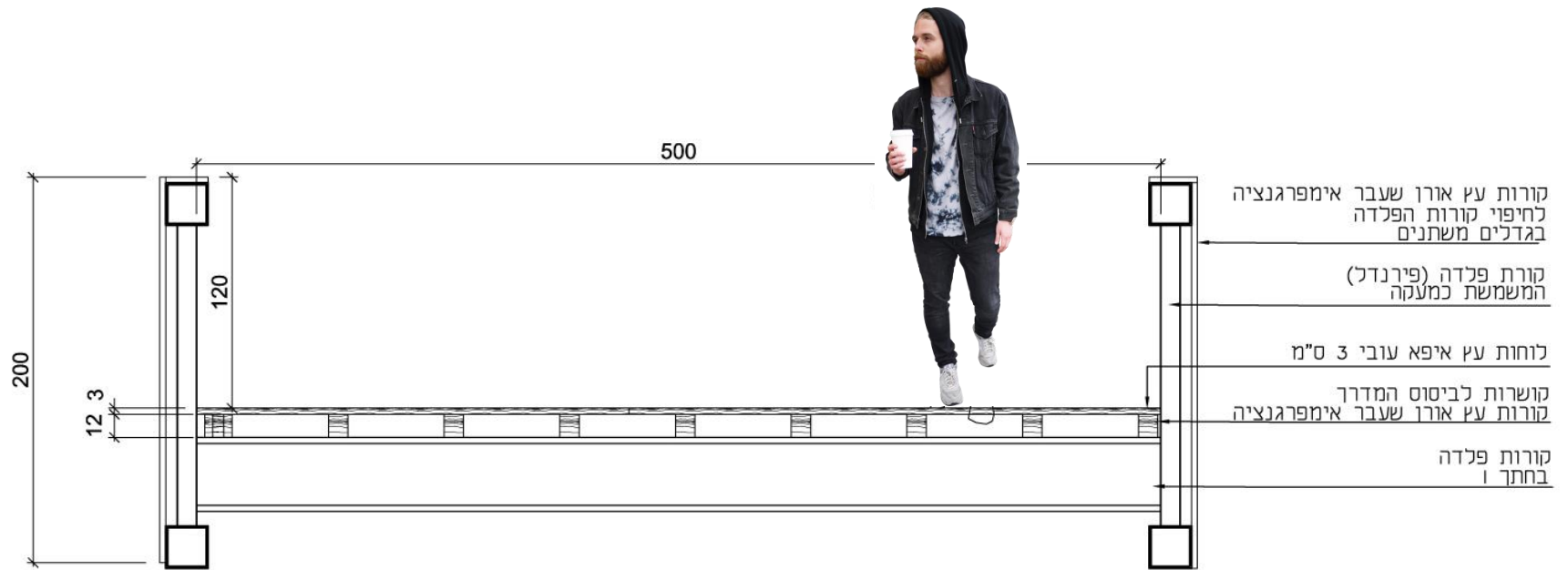
# Alternative 2 – Sculpture



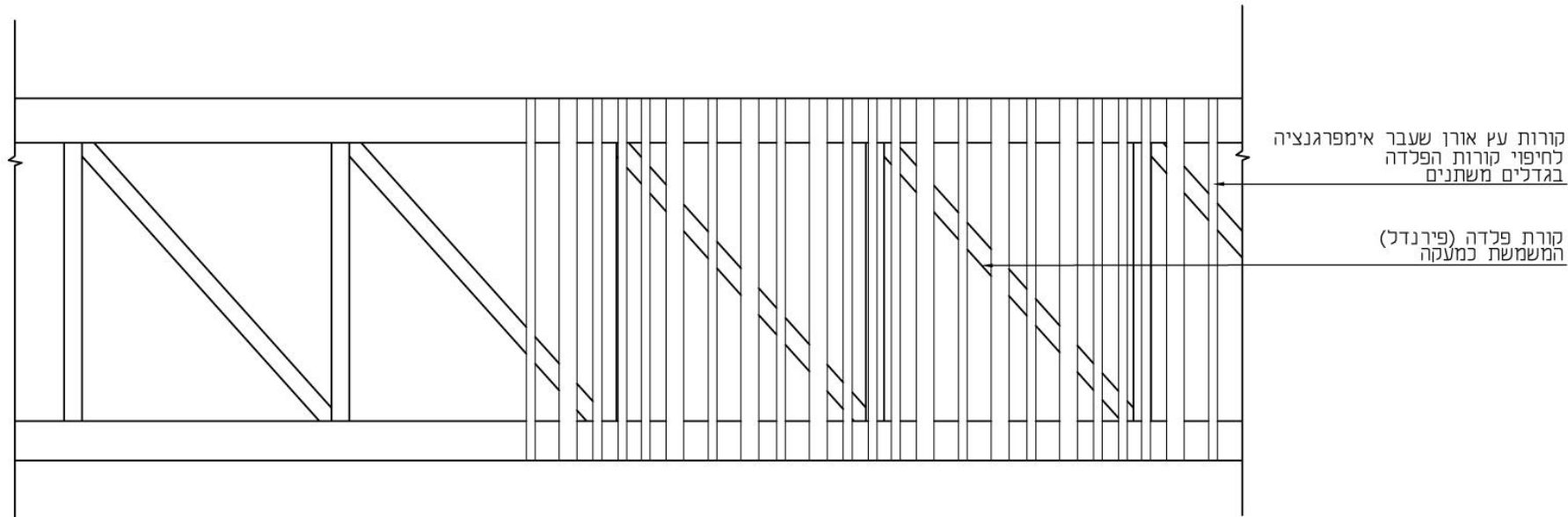


## Alternative 2 – Sculpture



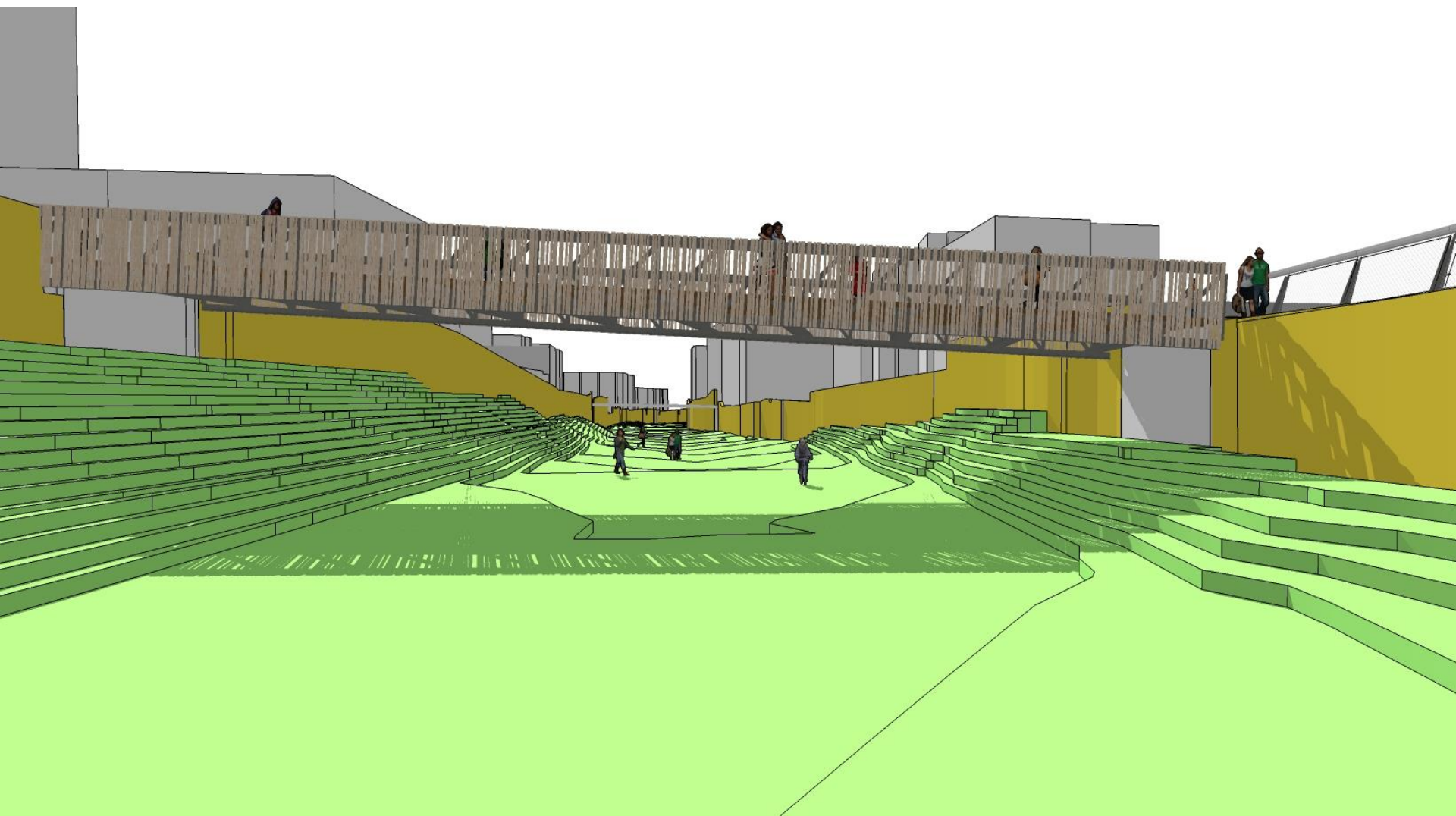


**3** Firandel construction with wood deck and irregular front cover from pine beams creating a sculpture in the landscape and interesting shadows



**3** Firandel construction with wood deck and irregular front cover from pine beams creating a sculpture in the landscape and interesting shadows









# Alternative 3 – Firandel, reduced

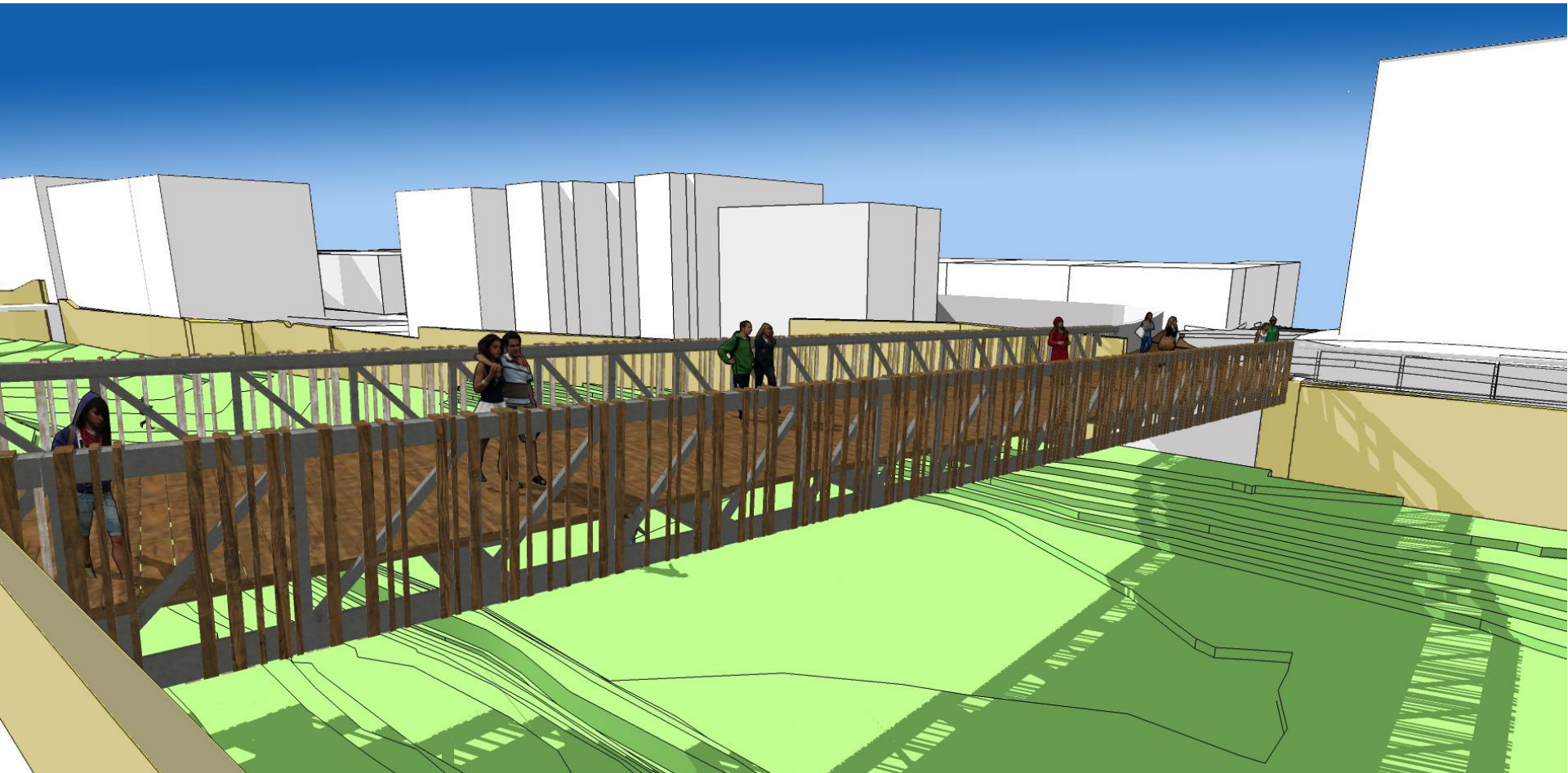




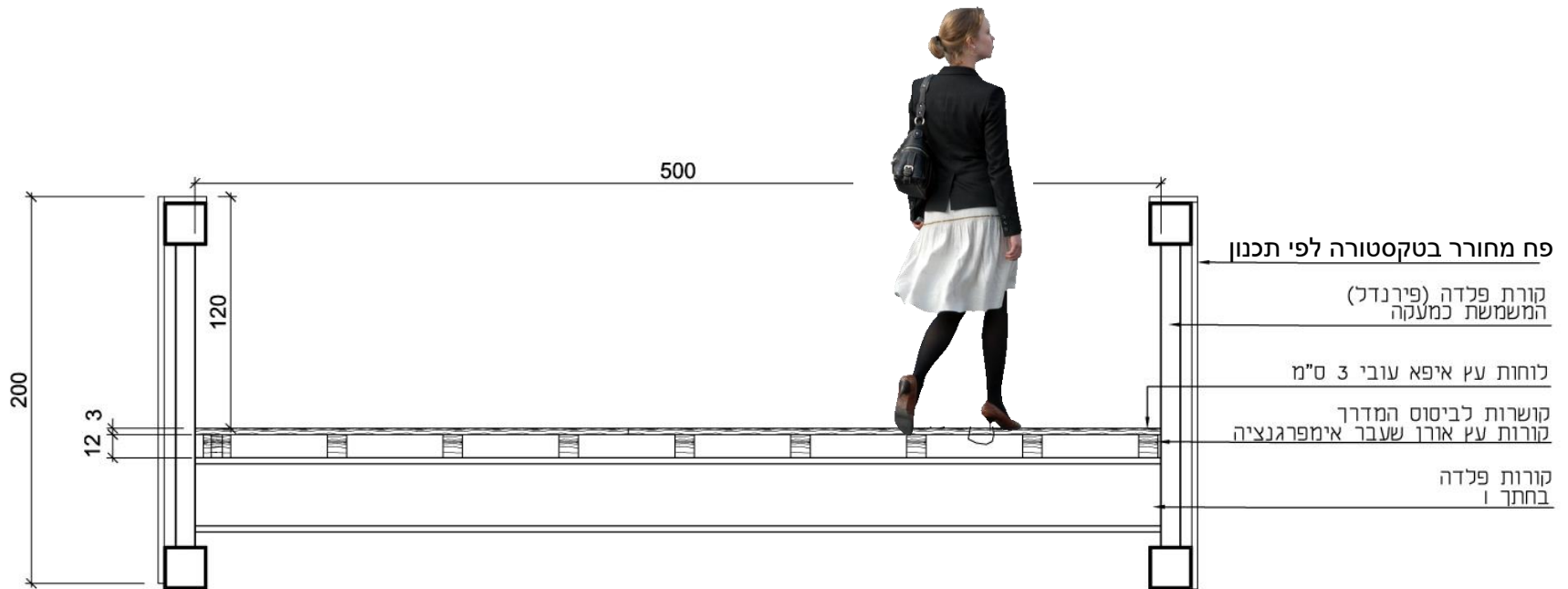
# Alternative 3 – Firandel, reduced



# Alternative 3 – Firandel, reduced



חלופה 3 – חלופת חיפוי פח/ פלדת קורטן מחוררת-חתך:  
קונסט' עם קורת פירנדל וחיפוי פח מחורר

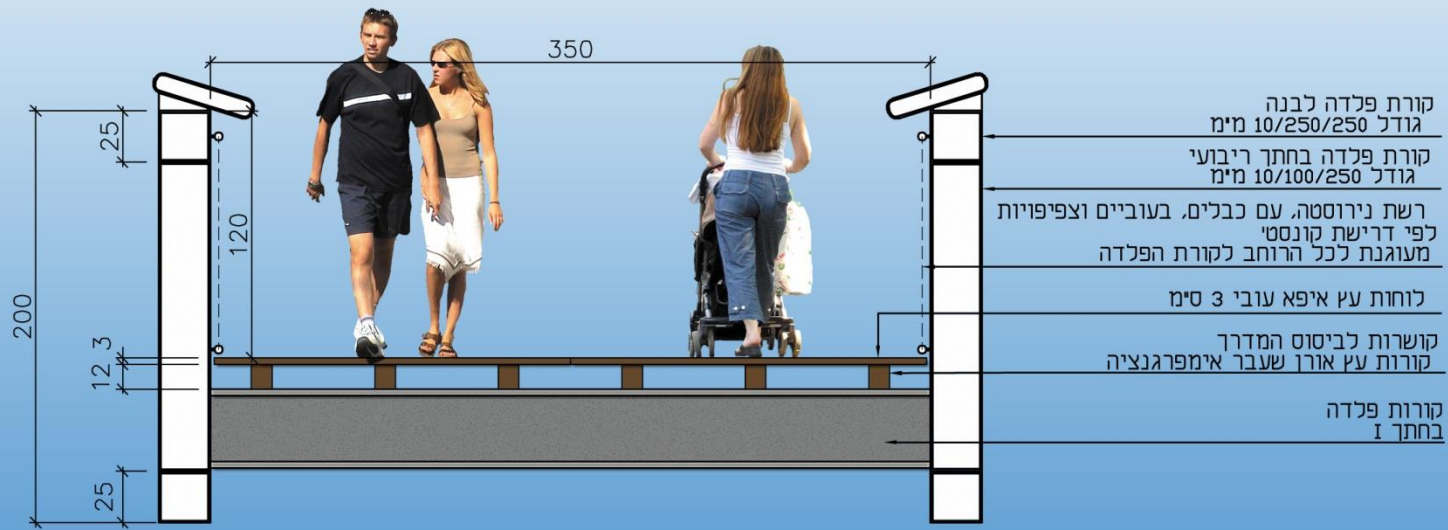


# 4

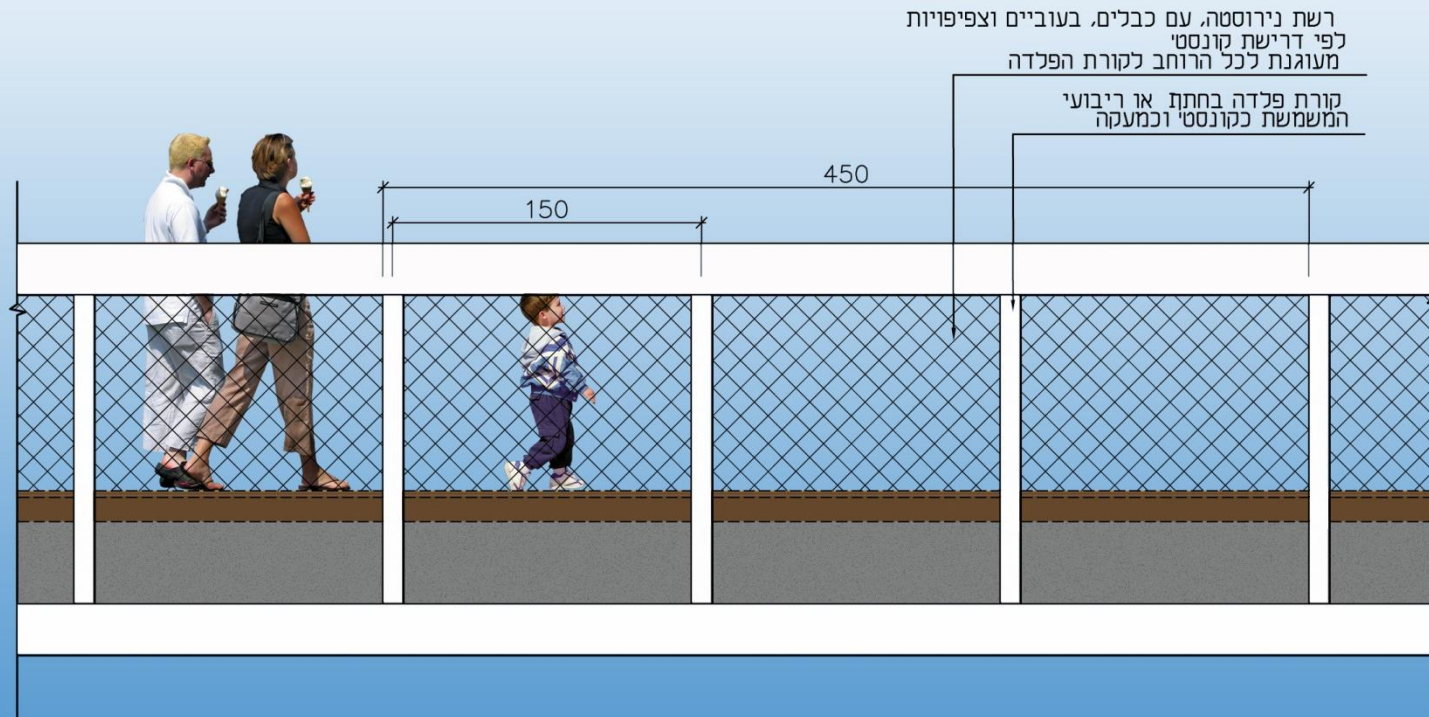
Firandel construction with wood deck and front cover from corten sheets in retrospect to the Turkish railroad history of the planning area



Corten steel cladding with the texture of ornamental branches



**5** Firandel construction in white color with orthogonal steel beams covered from the inside with a stainless steel net



**5** Firandel construction in white color with orthogonal steel beams covered from the inside with a stainless steel net

# Alternative 5 - Squares



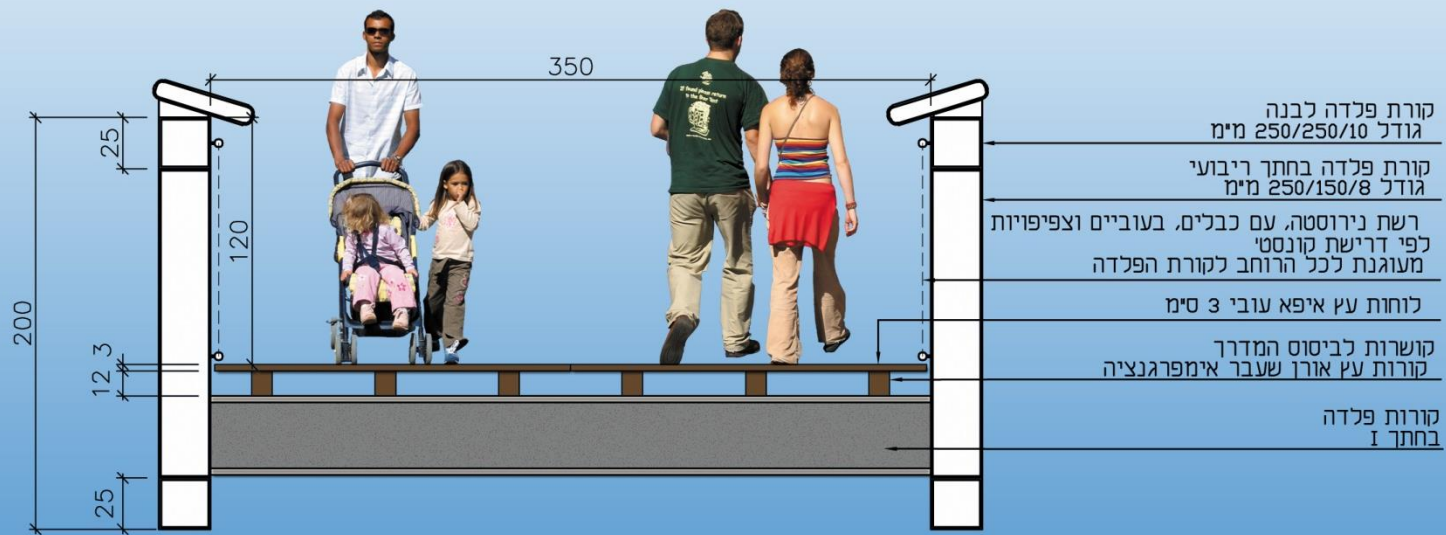
Nechushtan Bridge  
Tel Aviv

Construction design

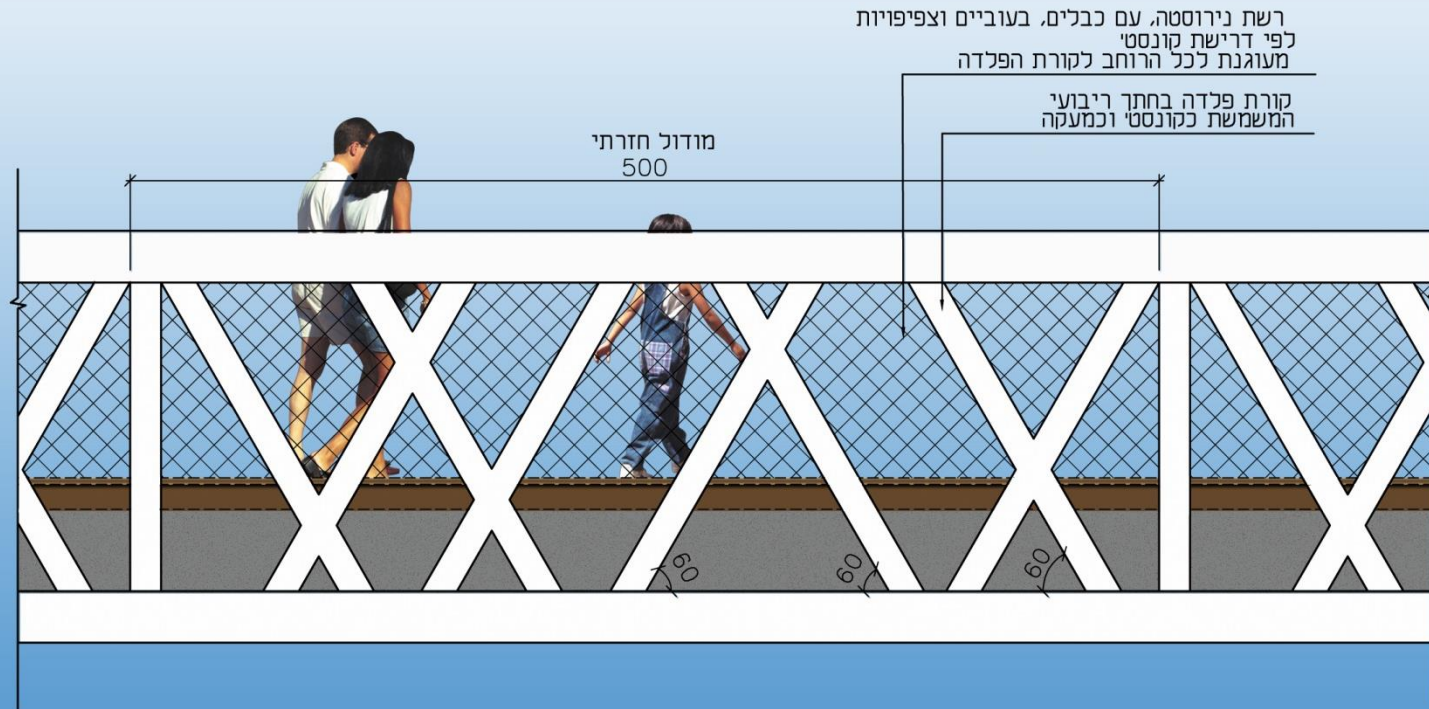
Braudo - Maoz  
Landscape Architecture Ltd.







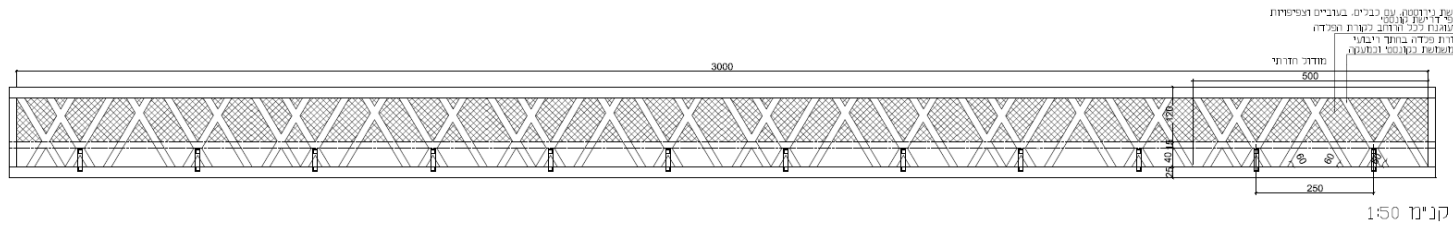
**6** Firandel construction with diagonal steel beams covered from the inside with stainless steel net emphasizing the railroad history of the planning area inside



**6** Firandel construction with diagonal steel beams covered from the inside with stainless steel net emphasizing the railroad history of the planning area inside

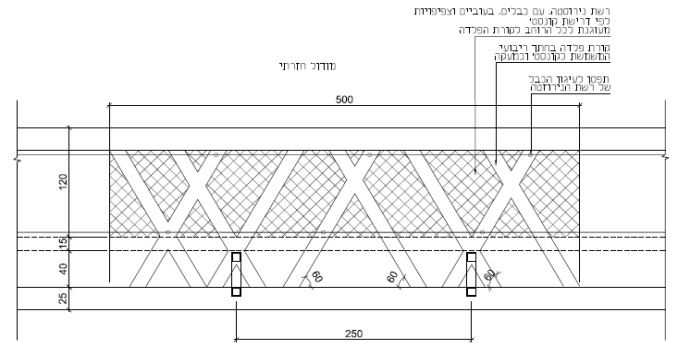


חזית הגשר



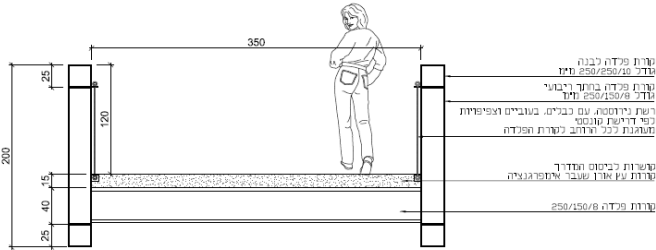
קנינו 1:50

חזית



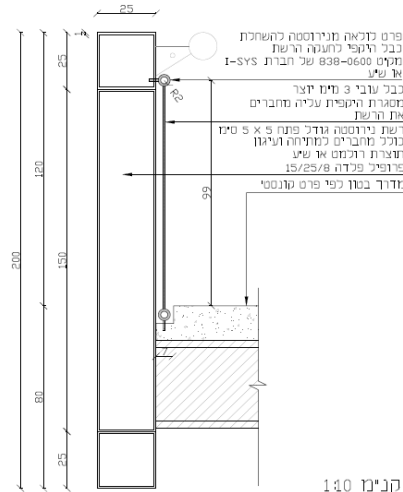
קנינו 1:25

חזר



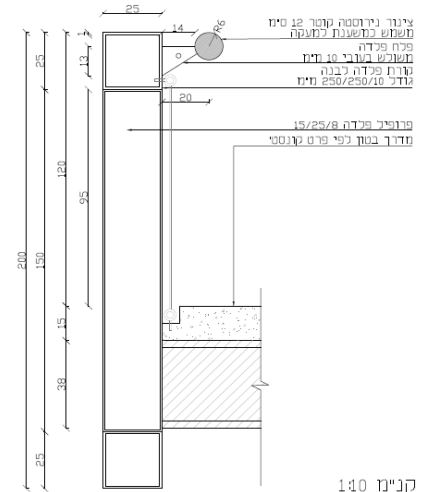
קנינו 1:25

פרט חיבור רשת



קנינו 1:40

פרט מעקה מרחיק



קנינו 1:40

<p>א = מודול / Mod. E = תוכנית / Plan. D = פרטים / Detail. C = פרטים / Detail. B = פרטים / Detail. A = מודול / Mod.</p> <p>שם הפרויקט / Project Name: <b>חברת הנחשטן</b></p> <p>תאריך / Date: <b>30.05.13</b></p> <p>מספר תוכנית / Drawing No.: <b>30.05.13</b></p>	<p>שם המעצב / Designer: <b>חברת הנחשטן</b></p> <p>שם המעצבת / Designer: <b>חברת הנחשטן</b></p> <p>שם המעצב / Designer: <b>חברת הנחשטן</b></p> <p>שם המעצבת / Designer: <b>חברת הנחשטן</b></p>
<p>שם הפרויקט / Project Name: <b>חברת הנחשטן</b></p> <p>שם המעצב / Designer: <b>חברת הנחשטן</b></p> <p>שם המעצבת / Designer: <b>חברת הנחשטן</b></p> <p>שם המעצב / Designer: <b>חברת הנחשטן</b></p> <p>שם המעצבת / Designer: <b>חברת הנחשטן</b></p>	<p>שם הפרויקט / Project Name: <b>חברת הנחשטן</b></p> <p>שם המעצב / Designer: <b>חברת הנחשטן</b></p> <p>שם המעצבת / Designer: <b>חברת הנחשטן</b></p> <p>שם המעצב / Designer: <b>חברת הנחשטן</b></p> <p>שם המעצבת / Designer: <b>חברת הנחשטן</b></p>
<p>שם הפרויקט / Project Name: <b>חברת הנחשטן</b></p> <p>שם המעצב / Designer: <b>חברת הנחשטן</b></p> <p>שם המעצבת / Designer: <b>חברת הנחשטן</b></p> <p>שם המעצב / Designer: <b>חברת הנחשטן</b></p> <p>שם המעצבת / Designer: <b>חברת הנחשטן</b></p>	<p>שם הפרויקט / Project Name: <b>חברת הנחשטן</b></p> <p>שם המעצב / Designer: <b>חברת הנחשטן</b></p> <p>שם המעצבת / Designer: <b>חברת הנחשטן</b></p> <p>שם המעצב / Designer: <b>חברת הנחשטן</b></p> <p>שם המעצבת / Designer: <b>חברת הנחשטן</b></p>
<p>שם הפרויקט / Project Name: <b>חברת הנחשטן</b></p> <p>שם המעצב / Designer: <b>חברת הנחשטן</b></p> <p>שם המעצבת / Designer: <b>חברת הנחשטן</b></p> <p>שם המעצב / Designer: <b>חברת הנחשטן</b></p> <p>שם המעצבת / Designer: <b>חברת הנחשטן</b></p>	<p>שם הפרויקט / Project Name: <b>חברת הנחשטן</b></p> <p>שם המעצב / Designer: <b>חברת הנחשטן</b></p> <p>שם המעצבת / Designer: <b>חברת הנחשטן</b></p> <p>שם המעצב / Designer: <b>חברת הנחשטן</b></p> <p>שם המעצבת / Designer: <b>חברת הנחשטן</b></p>
<p>שם הפרויקט / Project Name: <b>חברת הנחשטן</b></p> <p>שם המעצב / Designer: <b>חברת הנחשטן</b></p> <p>שם המעצבת / Designer: <b>חברת הנחשטן</b></p> <p>שם המעצב / Designer: <b>חברת הנחשטן</b></p> <p>שם המעצבת / Designer: <b>חברת הנחשטן</b></p>	<p>שם הפרויקט / Project Name: <b>חברת הנחשטן</b></p> <p>שם המעצב / Designer: <b>חברת הנחשטן</b></p> <p>שם המעצבת / Designer: <b>חברת הנחשטן</b></p> <p>שם המעצב / Designer: <b>חברת הנחשטן</b></p> <p>שם המעצבת / Designer: <b>חברת הנחשטן</b></p>